

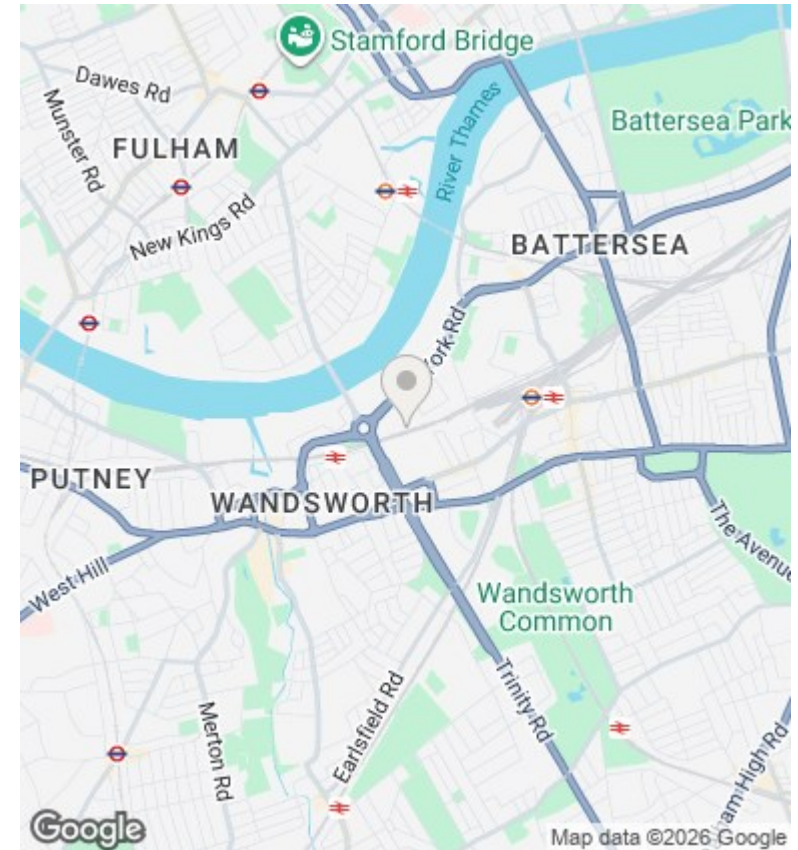
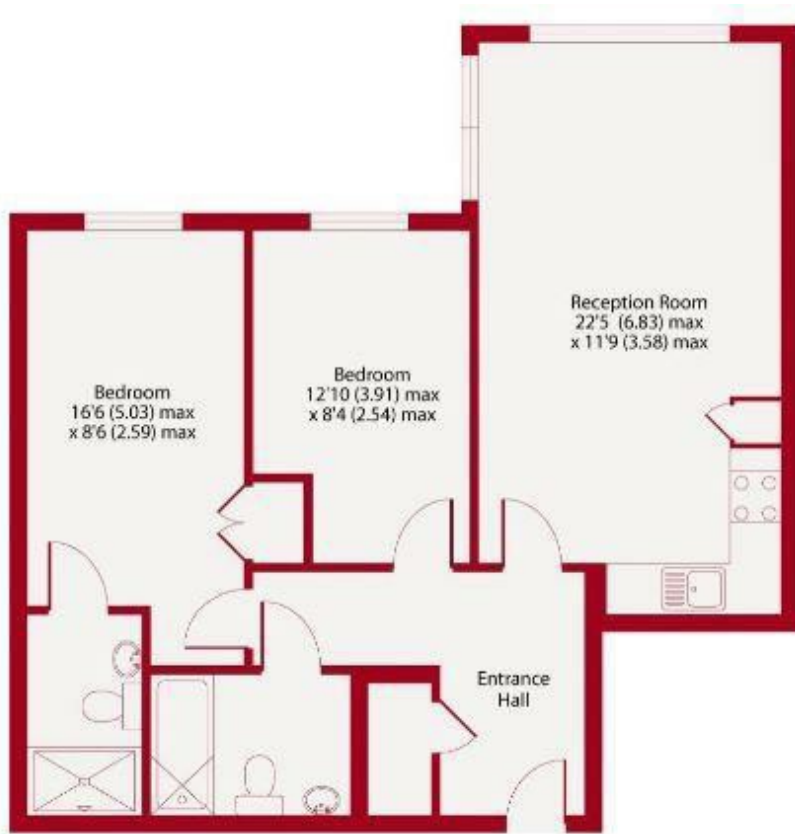
URBAN lettings



Petergate, London, SW11 2BF

£2,300 PCM

- Gated Development
- Two Double Bedrooms
- Integrated Kitchen with Dishwasher
- Wandsworth Council Tax Band E
- Secure off Street Parking
- Two Bathrooms
- Wood Floors & Double Glazing
- Communal Roof Terrace
- Open Plan Living with Dining Area
- Short Walk to Rail Network



Directions

Viewings

Viewings by arrangement only. Call 020 7585 2761 to make an appointment.

Council Tax Band

E

EPC Rating:

C

| Energy Efficiency Rating | | |
|--|----------------------------|-----------|
| | Current | Potential |
| <i>Very energy efficient - lower running costs</i> | | |
| (92 plus) A | | |
| (81-91) B | | |
| (69-80) C | 77 | 77 |
| (55-68) D | | |
| (39-54) E | | |
| (21-38) F | | |
| (1-20) G | | |
| <i>Not energy efficient - higher running costs</i> | | |
| England & Wales | EU Directive 2002/91/EC | |